

CAPELLA™

Solar Flood Light

Our Beyond Solar Capella Flood Light can be used in parking lot, on building or any location where having traditional lighting would costly. You don't have to invest thousands of dollars to run power and no messy wiring into an electrical system.

- Adjusting the solar panel angle maximizes solar collection and allows snow to slide off
- Light fixture can also be adjusted to the direction light is needed
- The Solar panel and Light Fixture can be installed on any pole
- The Eco Friendly and safe LifePo4 Battery improves the cycle charge and discharge over 2000 times
- Auto identify day/night, smart mode operation
- 140 Lumen per watt and IP65 rated
- 3 Years limited warranty on all components



KEY FEATURES



ANTI BLACK OUT

BY CHOOSING THE RIGHT COMPONENTS AND DIMENSIONING OUR ENGINEERS HAVE CALIBRATED ALL OUR SOLUTIONS FOR A PERFECT LIGHTING AUTONOMY. YOU WILL NEVER FACE A LIGHTING BLACK OUT.



UNEQUALED LIFETIME

BY CHOOSING ONLY HIGHEST COMPONENT AND ESPECIALLY LIFEPO4 BATTERY AND ELECTRONICS OUR PRODUCTS ARE MADE TO LAST.



EXTREME TEMPERATURE RESISTANCE

ALL OUR COMPONENTS ARE IP65 RATED. ALUMINIUM BODY AND FRAME AND STAINLESS BRACKET AVOID ANY RISK OF CORROSION



EASY INSTALLATION

THE BRACKET AND THE LIGHT FIXTURE CAN BE INSTALLED ON ANY POLE

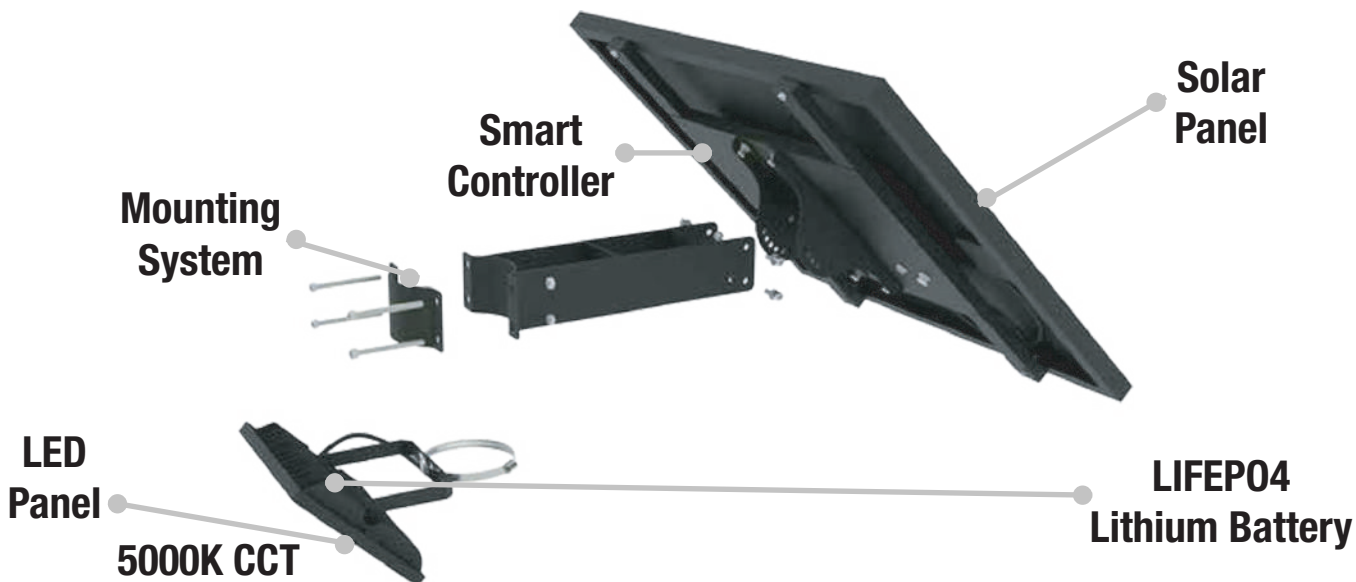


CAPELLA™ Solar Flood Light

EXPLODED VIEW

THE COMPACT SOLAR LIGHTING SOLUTION

The Beyond Solar LED Flood Light kit (BLK), is what we can call an All in Two. The bracket allows you to choose any angle or direction for the solar panel. The Light Fixture can also be adjusted to the right direction.



Model #	SKU #	Power	PV Type	Solar Panel	Lumens	Battery Capacity	Beam Angle	Working Time (Hrs)	IP Rating	Installation Height (Ft)
AVS-BLK-15W	786101	15W	MONO	50 Watts / 18V	2100	15 Ah 12.8 Volts	120°	+24H	IP65	6.5-9.8
AVS-BLK-20W	786102	20W	MONO	60 Watts / 18V	2800	18 Ah 12.8 Volts	120°	+24H	IP65	6.5-13.1
AVS-BLK-30W	786103	30W	MONO	80 Watts / 18V	4200	24 Ah 12.8 Volts	120°	+24H	IP65	9.8-16.4
AVS-BLK-40W	786104	40W	MONO	100 Watts / 18V	5600	28 Ah 12.8 Volts	120°	+24H	IP65	13.1-19.7
AVS-BLK-50W	786105	50W	MONO	110 Watts / 18V	7000	32 Ah 12.8 Volts	120°	+24H	IP65	13.1-23
AVS-BLK-60W	786106	60W	MONO	120 Watts / 18V	8400	38 Ah 12.8 Volts	120°	+24H	IP65	16.4-26.2



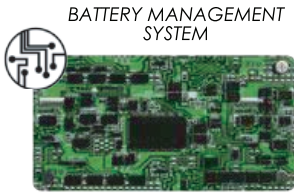
CAPELLA™ Solar Flood Light

LIFEPO4 BATTERY

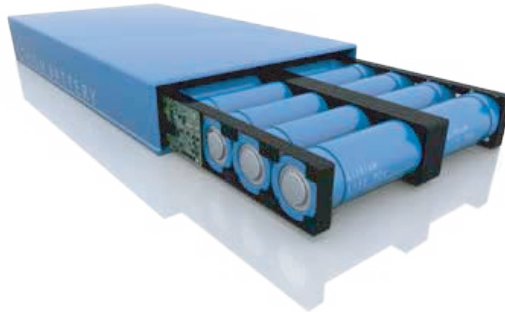
ULTRA-LONG LIFE LIFEPO4 LITHIUM BATTERY

The Eco-friendly and safe LiFePO4 Li-ion battery improves the cyclic charge and discharge over 2000 times and has a life span of more than 8 years.

10 YEARS
LIFE TIME



Electronic Algorithm Protection and battery management system for best use of the battery capacity.



LIFEPO4	VS	LI ION
Over 2000 cycles	☹️	Over 500 cycles
No Risk of Explosion	✅	Very High Risk Explosion in High Temperature
-10 to 75 Degree	🌡️	0 to 45 Degree
Over 10 Years	🕒	24 to 32 Months
	💰	50% Cheaper than LiFePO4

High Temperature Resistant
-20°C to +65°C



SAFETY
No Explosion Risk



Best Technology in the Market



SMART CONTROLLER

97 % CHARGING EFFICIENCY

MPPT (maximum power point tracking) controller automatically tracks the maximum power point according to the weather variation. Its charging rate is 16-30%

10 YEARS
LIFE TIME

FEATURES

- Maximum power point tracking charging
- Auto identify day/night
- 4 levels dimming design
- Smart mode operation
- Waterproof IP68



MULTI PROTECTION

OVER LOAD	OVER CURRENT	OVER TEMPERATURE
OVER VOLTAGE	OVER CHARGE	OVER DISCHARGE

IR REMOTE CONTROL MONITORING



- Check the state of the battery
- Check the charging history
- Settle different running time slots
- Issue diagnostic

MPPT VS PWM



Charging efficiency vs time



CAPELLA™ Solar Flood Light

LED LIGHTING

PHILIPS LUXEON HIGH EFFICACY LIGHTING

Combined with a heat dissipation design, pure aluminum lamp base with a sealed lens for optimal lighting and life span. Batwing lens is perfect for illumination and uniformity.

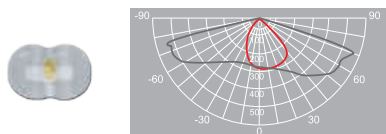
PHILIPS

150 Lumens per Watt

WATERPROOF CASING



BATWING LENSE LIGHT DISTRIBUTION CURVE



Light distribution with greater than 93% uniformity

Available power :

15W

20W

30W

40W

50W

60W

EASY INSTALLATION

INSTALL ON ANY POLE OR WALL

With a well designed bracket support, the Solar Light Kit is very Easy and Flexible to install on Any pole.



20W

30W

40W

50W

60W



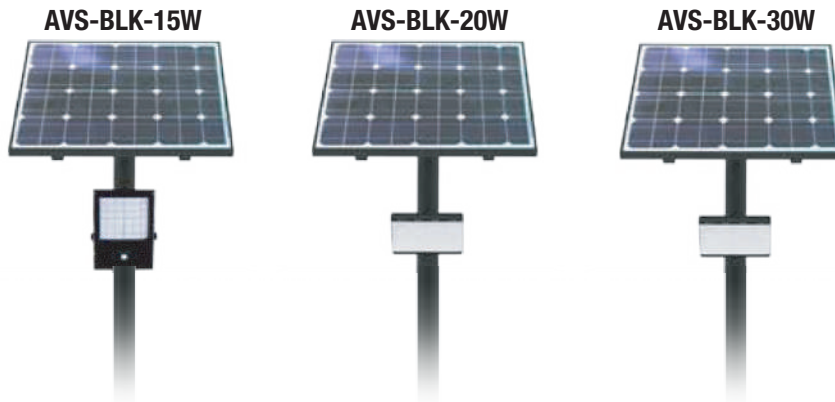
CAPELLA™

Solar Flood Light

TECHNICAL SPECIFICATIONS

MADE FROM THE HIGHEST QUALITY COMPONENTS

We at Beyond Solar, have selected the best components for the highest level of performance and durability.



	AVS-BLK-15W	AVS-BLK-20W	AVS-BLK-30W	
LIGHTING	LED POWER	15 Watts	20 Watts	30 Watts
	LUMINOUS FLUX	2100 Lumens	2800 Lumens	4200 Lumens
	EFFICIENCY	150 Lumens / Watts		
	CHIPS	PHILIPS		
	LED LIFETIME	Over 50000 hours		
	LIGHTING ANGLE	120 degree		
	MOUNTING HEIGHT	6.5-9.8 FT	6.5-13.1 FT	9.8-16.4 FT
STORAGE	TECHNOLOGY	Lithium Iron Phosphate LIFEPO4 18650 Cells including Battery Management System BMS		
	CAPACITY	15 Ah 12.8 Volts	18 Ah 12.8 Volts	24 Ah 12.8 Volts
	AUTONOMY	Over 24 hours at full Charge - 4 Rainy Days Back up		
	CHARGING TIME	6-7 hours		
	LIFESPAN	Over 2500 cycles - 8 to 10 years Lifetime		
	CERTIFICATE	En 61427 MSDS		
ENERGY	SOLAR PANEL	50 Watts / 18V	60 Watts / 18V	80 Watts / 18V
	LIFESPAN	Monocrystalline Panel Grade A 25 Years		
	CERTIFICATES	IEC 61215 ; IEC 61730 I and II ; IEC 60904		
ELECTRONIC	CONTROLLER	MPPT SMART CONTROLLER		
	SENSOR	PIR Sensor Optional		
	CABLING	Waterproof Connector, Plug and Play		
	CERTIFICATES	En 55015 ; En 61000		
DIMENSIONS	UNIT SIZE (in)	20.0787*24.0157*4.0354331	27.9528*20.0787*4.0354331	29.1339*26.378*5.3346457
	CARTON SIZE (in)	26.7717*22.4409*7.28346	29.5276*22.4409*6.49606	28.3465*35.4331*7.87402
	NET WEIGHT (lb)	19.6211	30.930855	35.274
	GROSS WEIGHT (lb)	22.156457	33.135478	40.78552
	QTY PER CONTAINER	417pcs/883pcs	423pcs/896pcs	220pcs/470pcs



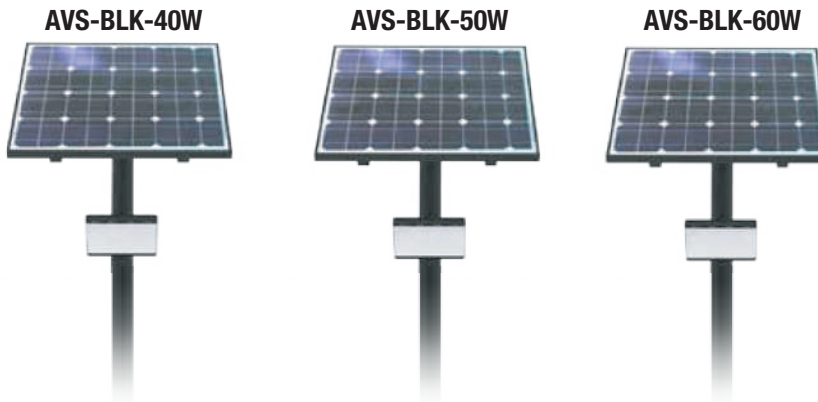
CAPELLA™

Solar Flood Light

TECHNICAL SPECIFICATIONS

MADE FROM THE HIGHEST QUALITY COMPONENTS

We at Beyond Solar, have selected the best components for the highest level of performance and durability.



	AVS-BLK-40W	AVS-BLK-50W	AVS-BLK-60W	
LIGHTING	LED POWER	40 Watts	50 Watts	60 Watts
	LUMINOUS FLUX	5600 Lumens	7000 Lumens	8400 Lumens
	EFFICIANCY	150 Lumens / Watts		
	CHIPS	PHILIPS Luxeon		
	LED LIFETIME	Over 50000 hours		
	LIGHTING ANGLE	120 degree		
	MOUNTNING HEIGHT	13.1-19.7 FT	13.1-23 FT	16.4-26.2 FT
STORAGE	TECHNOLOGY	Lithium Iron Phosphate LIFEPO4 18650 Cells including Battery Management System BMS		
	CAPACITY	28 Ah 12.8 Volts	32 Ah 12.8 Volts	38 Ah 12.8 Volts
	AUTONOMY	Over 24 hours at full Charge - 4 Rainy Days Back up		
	CHARGING TIME	6-7 hours		
	LIFESPAN	Over 2500 cycles - 8 to 10 years Lifetime		
	CERTIFICATE	En 61427 MSDS		
ENERGY	SOLAR PANEL	100 Watts / 18V	110 Watts / 18V	120 Watts / 18V
	LIFESPAN	Monocrystalline Panel Grade A 25 Years		
	CERTIFICATES	IEC 61215 ; IEC 61730 I and II ; IEC 60904		
ELECTRONIC	CONTROLLER	MPPT SMART CONTROLLER		
	SENSOR	PIR Sensor Optional		
	CABLING	Waterproof Connector, Plug and Play		
	CERTIFICATES	En 55015 ; En 61000		
DIMENSIONS	UNIT SIZE (in)	29.1339*26.378*5.3346457	43.77953*26.378*5.3346457	43.77953*26.378*5.3346457
	CARTON SIZE (in)	35.4331*29.1339*7.87402	46.06299*28.7402*7.48031	46.06299*28.7402*7.48031
	NET WEIGHT (lb)	35.274	41.8878	44.53338
	GROSS WEIGHT (lb)	41.468952	46.2971	49.471732
	QTY PER CONTAINER 20» / 40» / 40 HQ	204pcs/452pcs	194pcs/390pcs	194pcs/pcs



CAPELLA™

Solar Flood Light

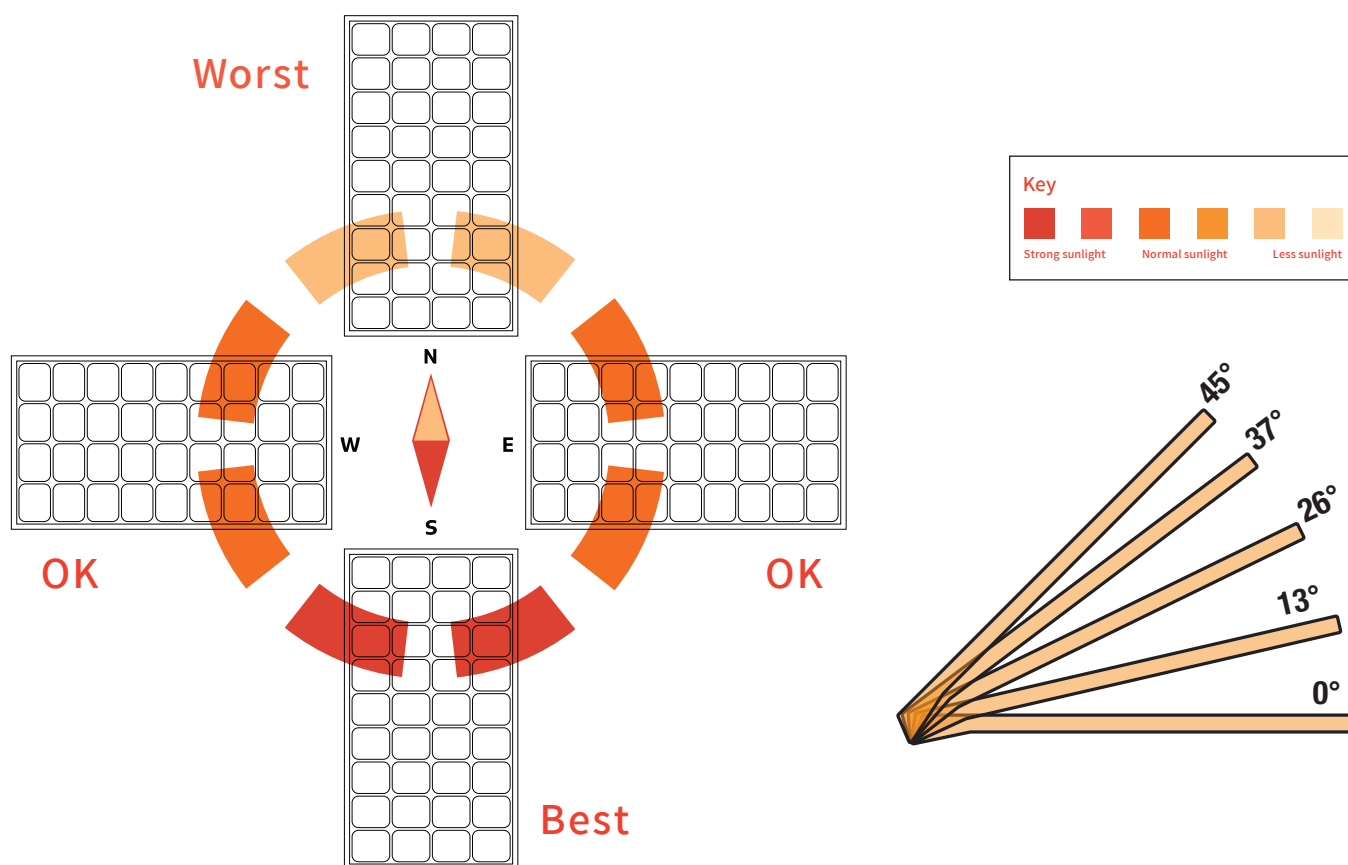
Optimum Panel Orientation

The Solar charge in a battery pack won't last forever. The off-grid system relies on stored solar energy for autonomy. Angling your solar panels properly can boost the power intake of your solar lighting system. You want to angle your solar panels at a tilt based on the area's latitude.

Tip for Maximum Power

You can increase the tilt 15° in the winter or decrease 15° in the summer. In this way you can get the maximum sunlight to recharge the battery.

Best Facing Direction of Solar Panel

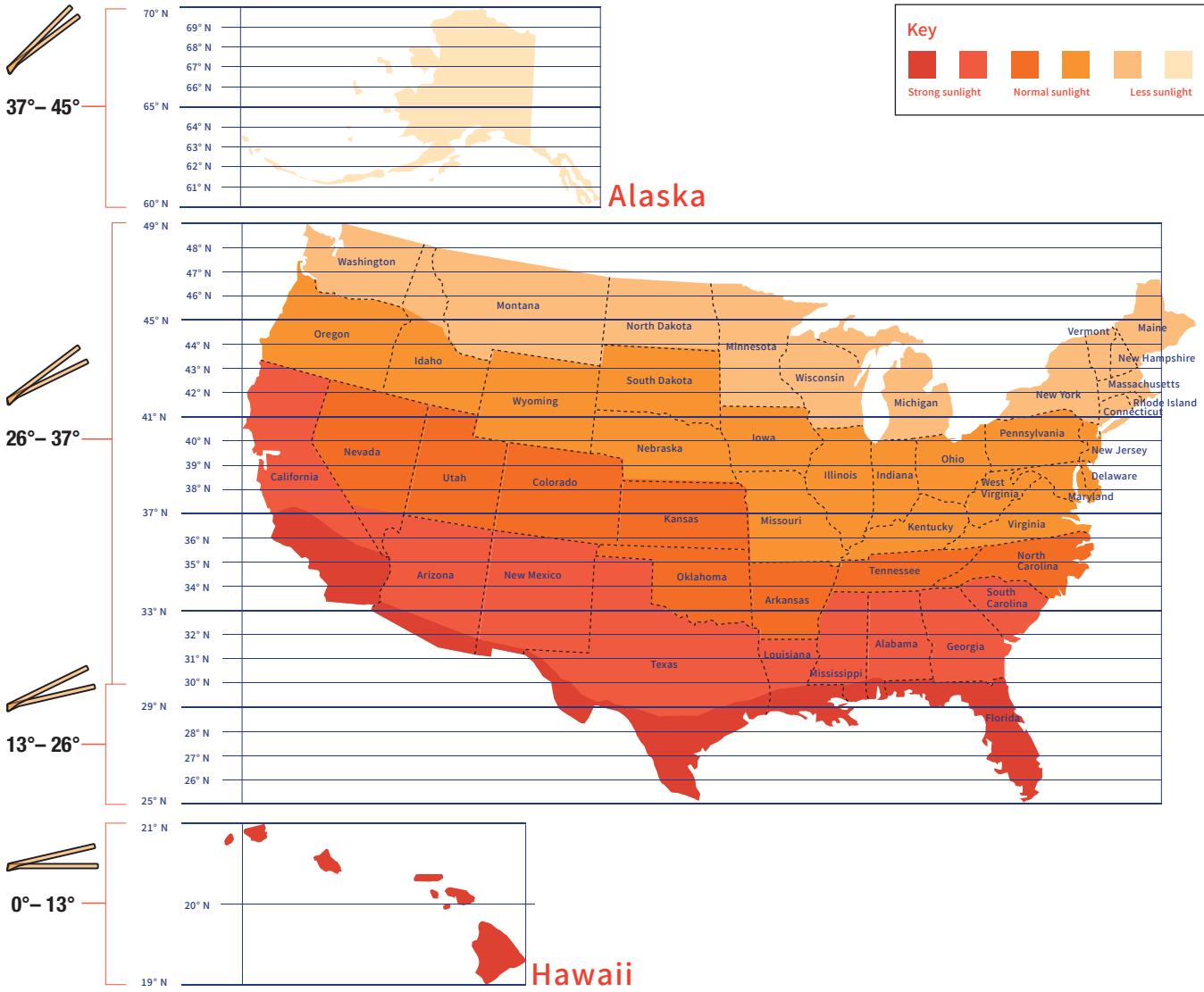


The area will dictate the installation of the fixtures and will sometimes prevent the lights from facing south. Panels facing West & East won't get as much light as Southern facing panels, but will still collect a good amount of sunlight. A North facing panel also works, but it will take longer to charge than any other direction. This would mean that the solar charge will be less optimal if installations are facing North.

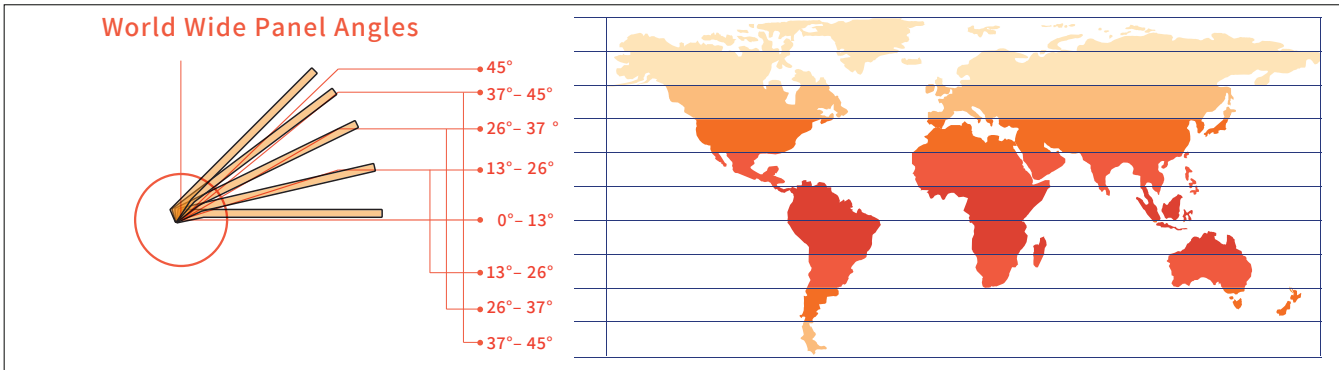


CAPELLA™ Solar Flood Light

Optimum Panel Orientation



SOLAR AREA LIGHT



CAPELLA™

Solar Flood Light

SOLAR AREA LIGHT



CAPELLA™

Solar Flood Light



SOLAR AREA LIGHT

